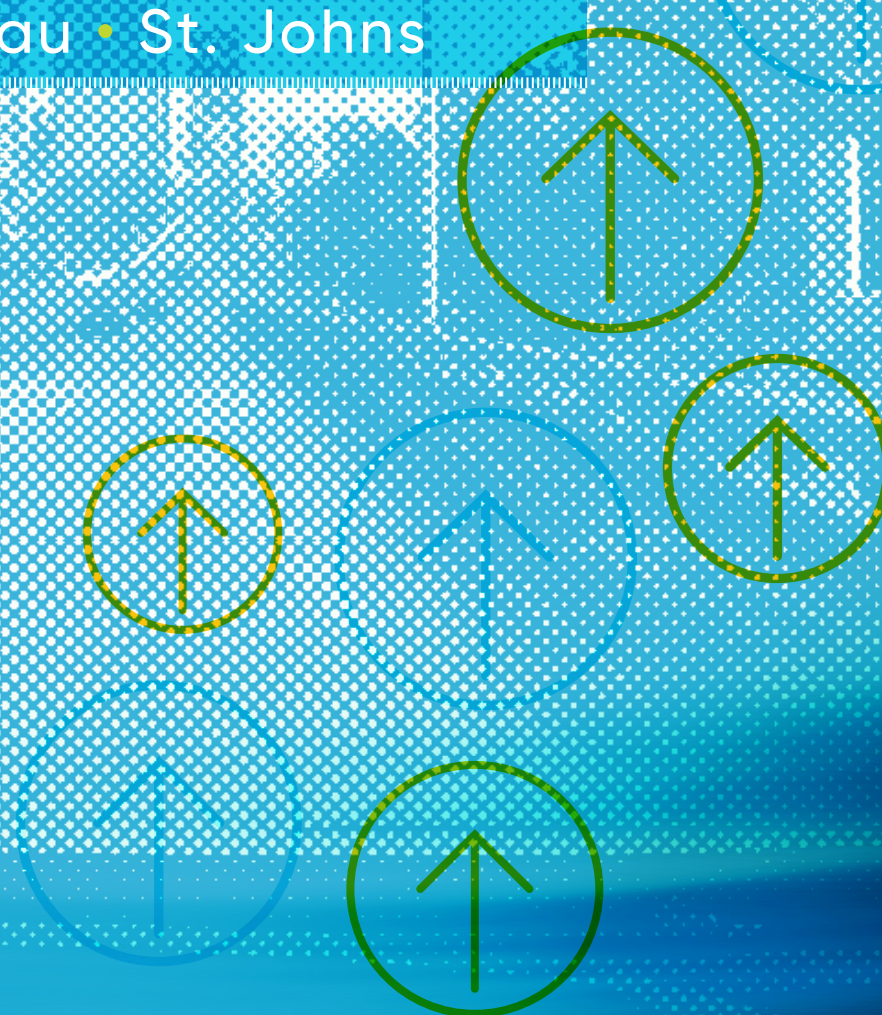


Transportation System

TRENDS

for the North Florida Region

Clay • Duval • Nassau • St. Johns



2021 ANNUAL
**MOBILITY
REPORT**

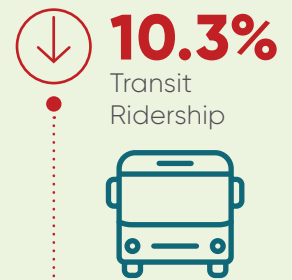
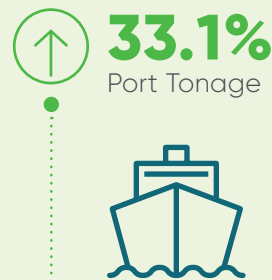
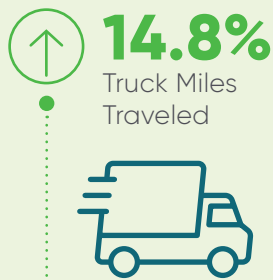
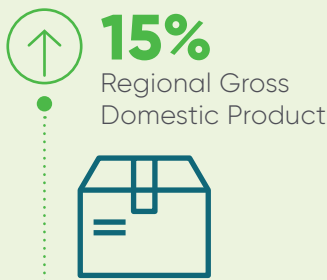
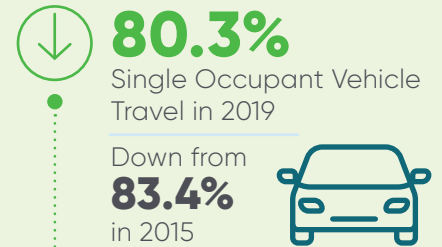
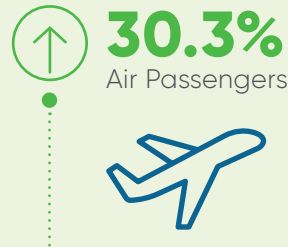
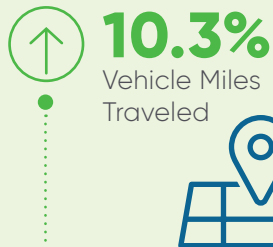


TRACKING TRENDS 2015-2019

The North Florida TPO's Congestion Management Process was updated in 2019 and identifies performance measures for our transportation system. Each year, performance data is collected and analyzed to identify trends, issues and planning strategies to improve mobility in the region. The full data set is available through 2019 and selected data is available for 2020.

Learn more by reading the **2021 Annual Mobility Report** and visiting the **North Florida TPO Congestion Management Dashboard** at cmp.northfloridatpo.com.

GROWTH



CONGESTION



SAFETY



2019-2020

The Covid-19 pandemic affected travel both locally and globally. Air travel saw the greatest reduction and roadway travel times became more reliable as expected with less traffic. Though we do not have the final data on vehicle miles traveled (VMT) and related measures for 2020, we know that volumes decreased substantially, while traffic fatalities increased.



AIR TRAVEL

60.4%
Air Passengers



RELIABILITY



Level of Travel Time Reliability (LOTTR) is calculated with data from BlueTOAD Bluetooth sensors deployed on major commuting corridors and measures the variability in travel time for the typical weekday travel times.



The majority of corridors in the North Florida TPO region have maintained or improved reliability from 2018 to 2019. In 2020, most roadways showed significant increases in reliability likely due to lower traffic volumes as a result of Covid-19.

TRAFFIC FATALITIES

8.6%
Total Crashes
in 2019-2020



13.4%
Total Fatalities
in 2019-2020

263
Total Fatalities
in 2020



Despite lower traffic volumes, the number of fatalities was the highest in the North Florida region over the past five years.



Over 40% of 2020 traffic fatalities were caused by impaired driving.

CURRENT TRAFFIC SAFETY TRENDS ARE DEADLY

This is not a local phenomenon. Nationally, 2020 brought an increase in traffic fatalities. According to June 2021 report from the National Highway Traffic Safety Administration:

“While Americans drove less in 2020 due to the pandemic, NHTSA’s early estimates show that an estimated 38,680 people died in motor vehicle traffic crashes—the largest projected number of fatalities since 2007. This represents an increase of about 7.2% as compared to the 36,096 fatalities reported in 2019.”

“NHTSA’s analysis shows that the main behaviors that drove this increase include impaired driving, speeding and failure to wear a seat belt.”

As more and more drivers venture back onto our roadways, it is critical to refocus on basic safety measures to turn this trend around. Don’t drive if you are at all impaired; follow the speed limit; watch out for pedestrians and bicyclists; and always wear a seat belt.

To read the full 2021 Mobility Report, please visit
www.northfloridatpo.com

904.306.7500 // 980 NORTH JEFFERSON STREET

